

Evex Mini-SEM

Miniature Scanning Electron Microscope

A - Evex Mini-SEM (Scanning Electron Microscope)

B - Power Button & Sample Exchange Button

C - Vacuum Level -

D - Sample Exchange -

- Chamber Size - 4x4x4

- Sample Size - 2x2x2

- Sample Position (X,Y,R)

E - High Speed -- Liquid Nitrogen Free --- X-ray Detector

- Detects Elements 4 - 92 \$\$\$\$ (Be - U) (SSUTW)

- Detects Elements 5 - 92 \$\$\$ (B - U) (SUTW)

- Detects Elements 6 - 92 \$\$ (C - U) (UTW)

- Detects Elements 11 - 92 \$ (Na - U) (TW)

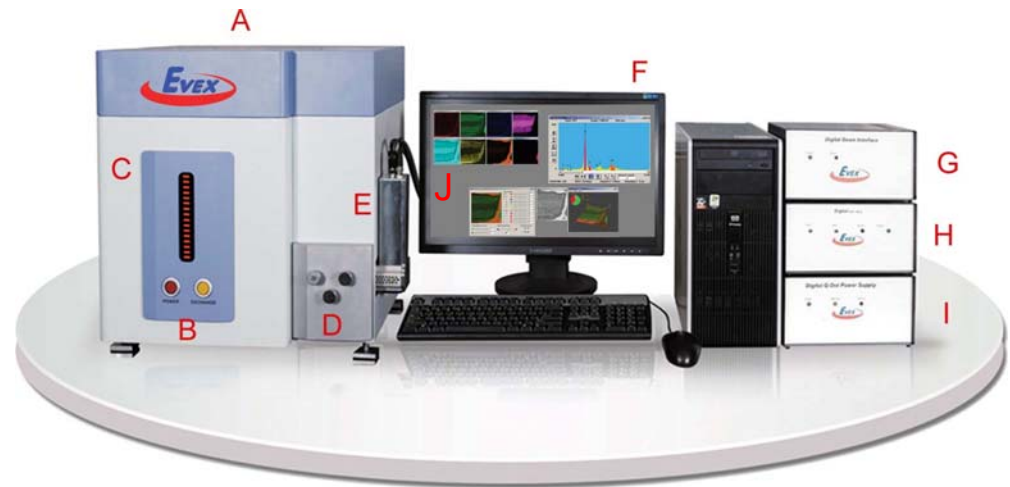
F - NanoAnalysis - Software

G - Spectral Acquisition Module - Elemental Composition

H - Image Acquisition Module - Image

I - X-ray Detector Power Supply

J - Elemental Mapping



Evex NanoAnalysis Features

Image Acquisition Module

- Image Processing
- Image Analysis
- Image Operations
- Image Filters
- Thermal Imaging
- Image Measurement / Annotation
- Easy Report Writing
- AutoSave

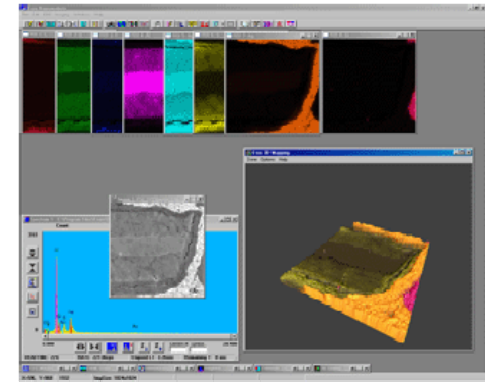


Spectral Acquisition Module

- Spectral Processing
- Spectral Analysis
- Qualitative Analysis
- Quantitative Analysis
- Monte Carlo Simulation
- Detector Geometry Wizard
- Auto ID with Peak Labeling
- Auto Region of Interest (ROI)
- Automatic Calibration & Logging
- Easy Report Writing
- AutoSave

Elemental Mapping

- Standard Elemental Mapping
- Ultra Fast Mapping
- Line Scan
- Point Mode & MultiPoint
- AutoAnalysis (Spectra at Every Pixel)
- ColorSEM - Quick Rendering
- Focus Mapping
- Thermal Mapping
- Easy Report Writing
- AutoSave



Advanced Features

- Chemical Typing
- Trace Sensitive Analysis
- Critical Measurement
- 3D Mapping
- 3D Measurement
- AutoAnalysis (Spectra at Every Pixel)
- Remote Conferencing
- Stereo Imaging
- Synchro-Analysis

Spectral Acquisition Module

Spectral Acquisition Module

Spectral Processing
Spectral Analysis - Identification
Qualitative Analysis
Quantitative Analysis
Monte Carlo Simulation
Detector Geometry Wizard
Auto ID with Peak Labeling
Auto Region of Interest (ROI)
Automatic Calibration & Logging
Easy Report Writing
AutoSave

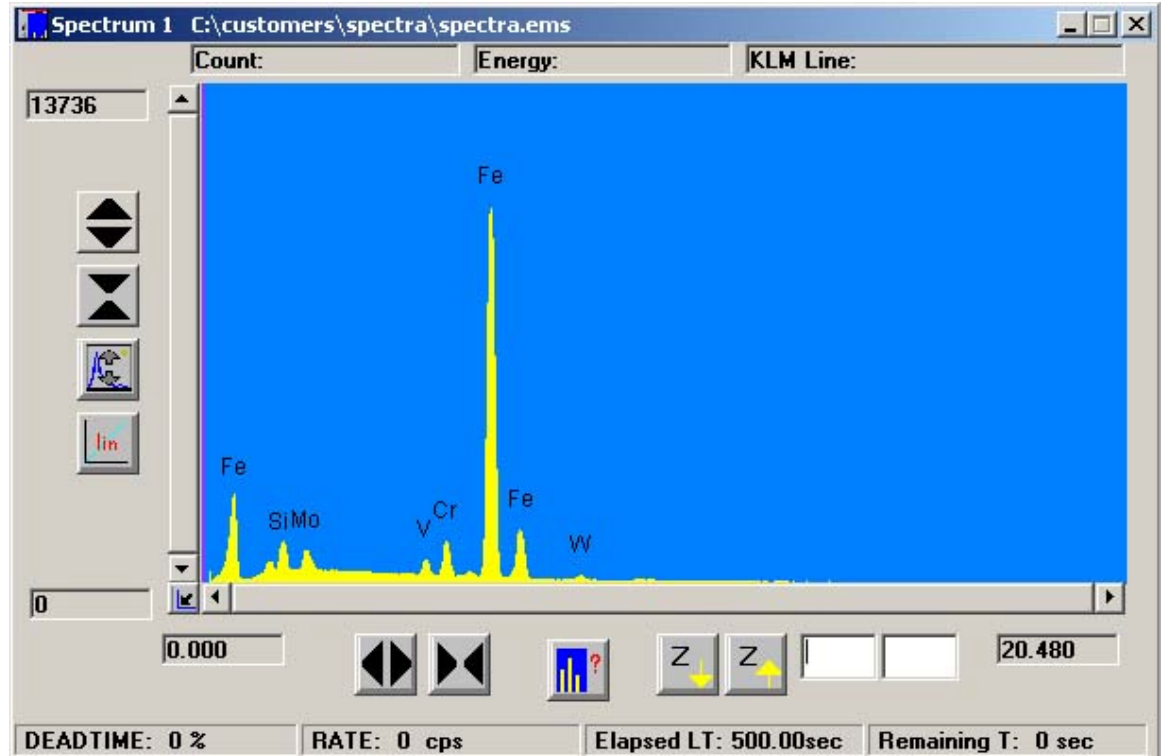


Image Acquisition Module

Image Acquisition Module - Advanced

Image Processing

Image Analysis

Image Operations

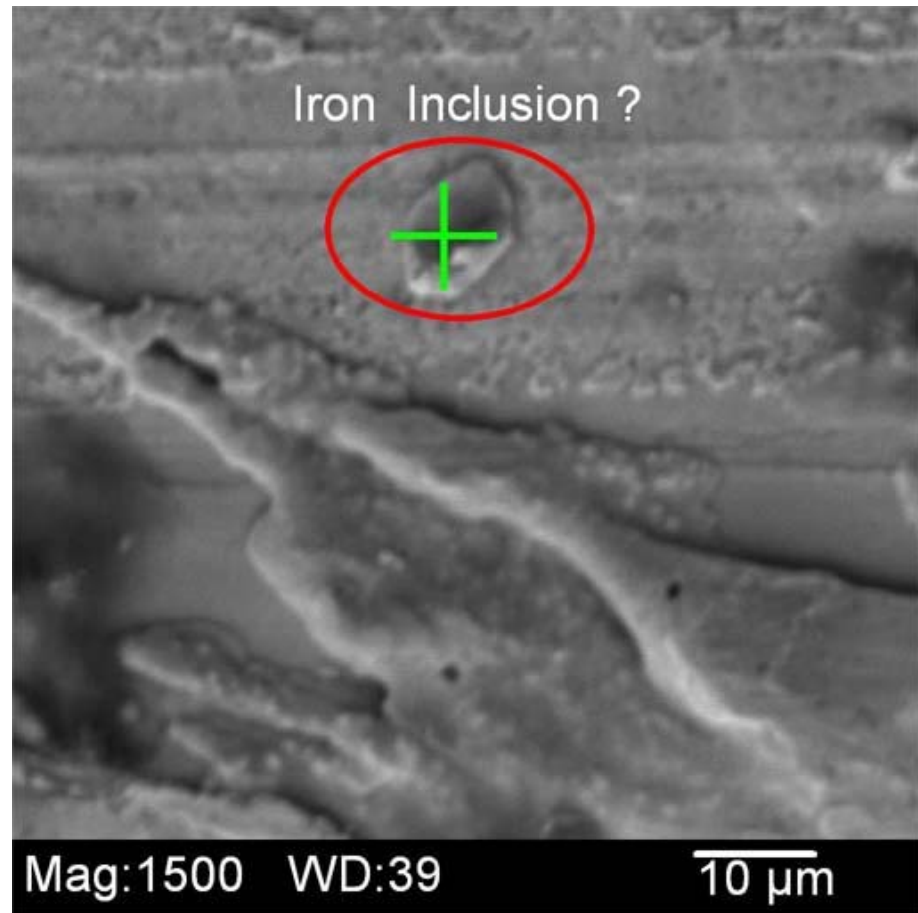
Image Filters

Thermal Imaging

Image Measurement / Annotation

Easy Report Writing

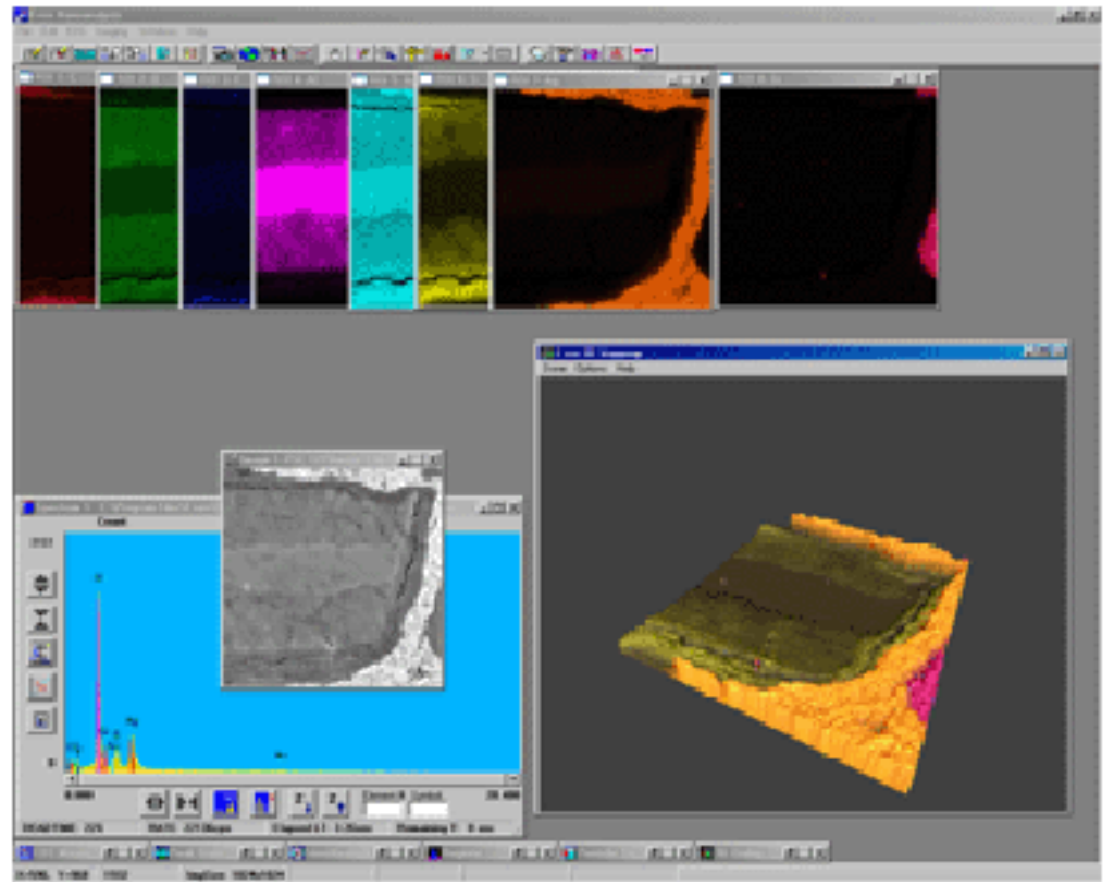
AutoSave



Elemental Mapping Module

Elemental Mapping

- Standard Elemental Mapping
- Ultra Fast Mapping
- Line Scan
- Point Mode & MultiPoint
- AutoAnalysis (Spectra at Every Pixel)
- ColorSEM - Quick Rendering
- Focus Mapping
- Thermal Mapping
- Easy Report Writing
- AutoSave



Map the position of each element in the sample.